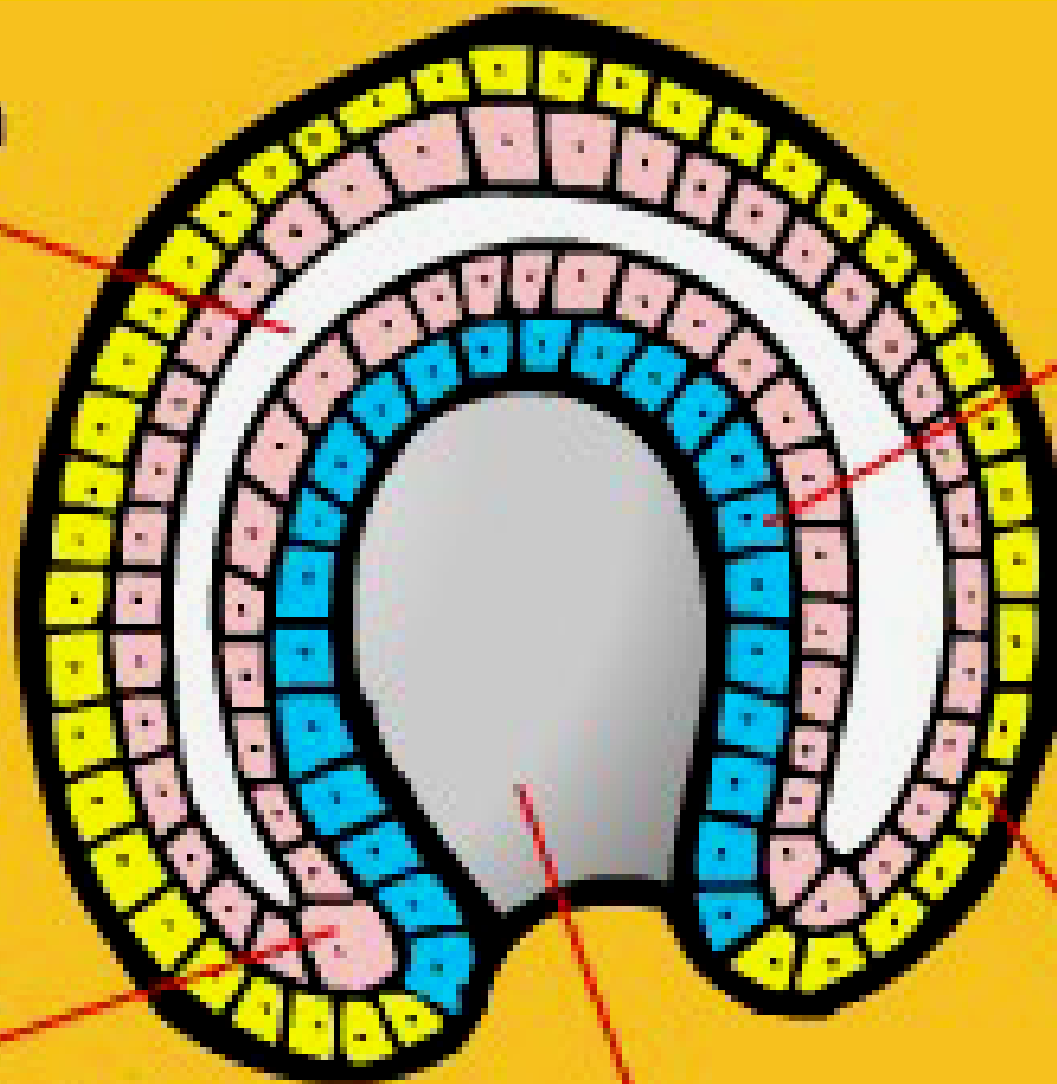


EMBRIOLOGIA



Celoma

Endoderma

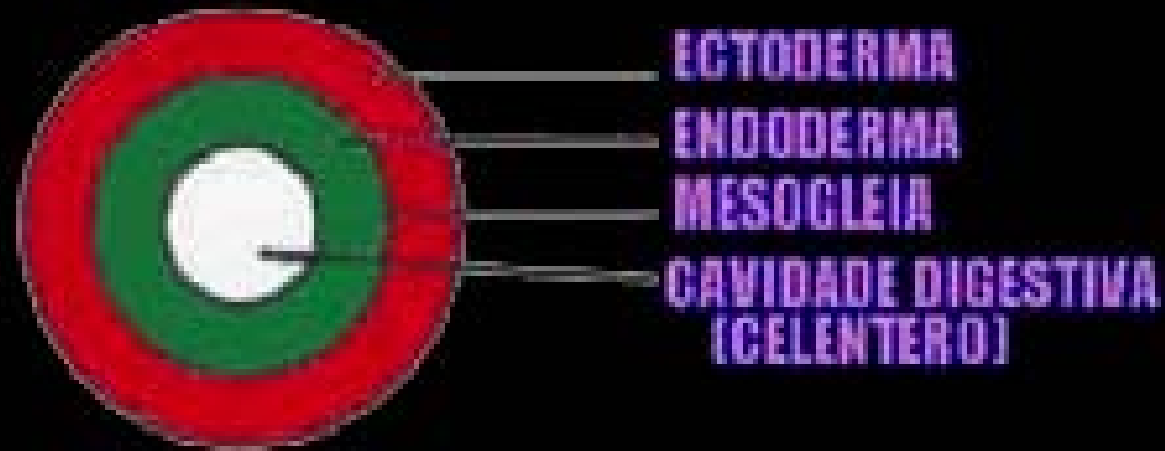


Mesoderma

Arquêntero

Ectoderma

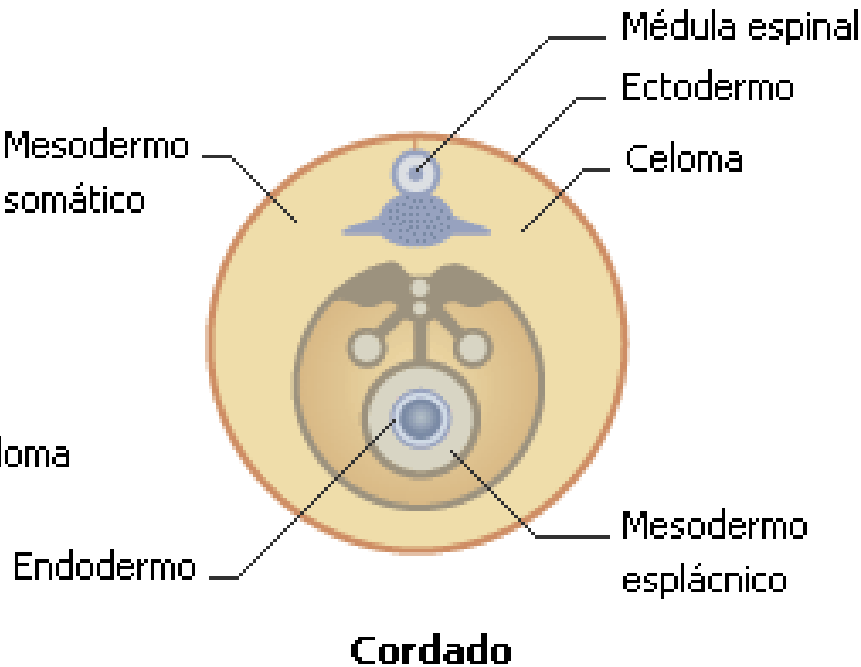
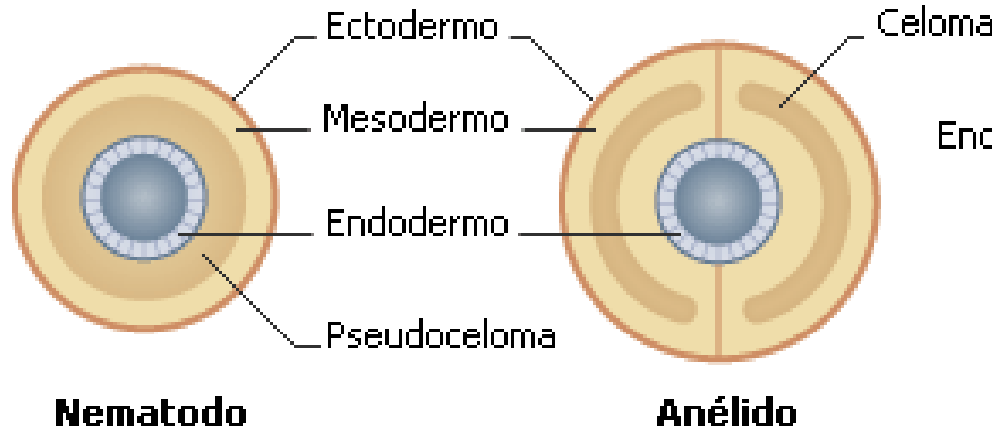
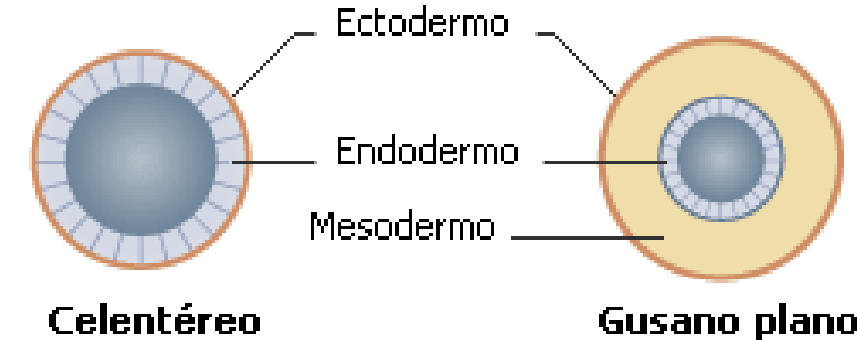
**(a) DUAS CAMADAS, SEM CELOMA
(CELESTRADO)**

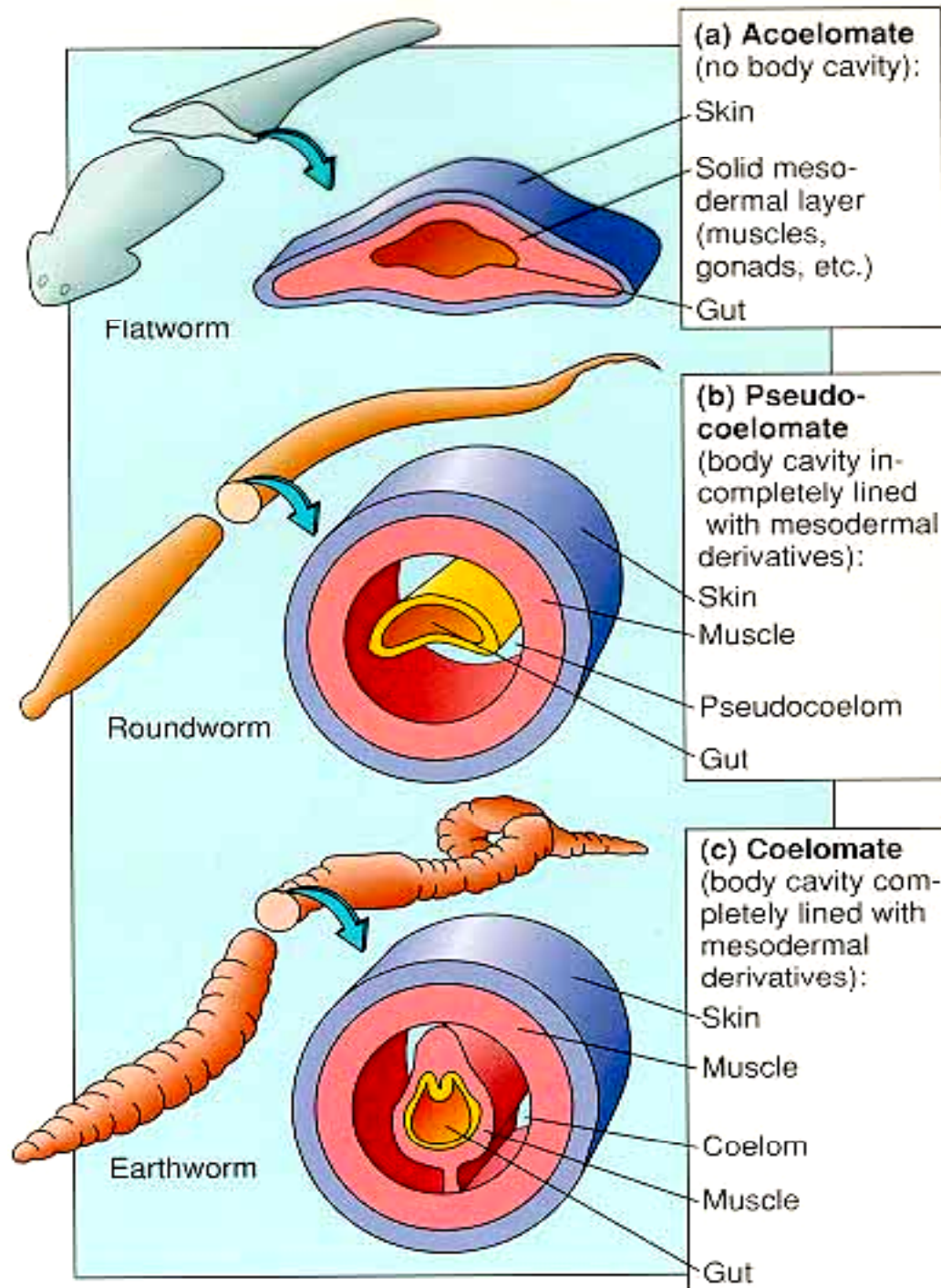


**(b) TRES CAMADAS, SEM CELOMA
(PLATELMINTOS, etc.)**

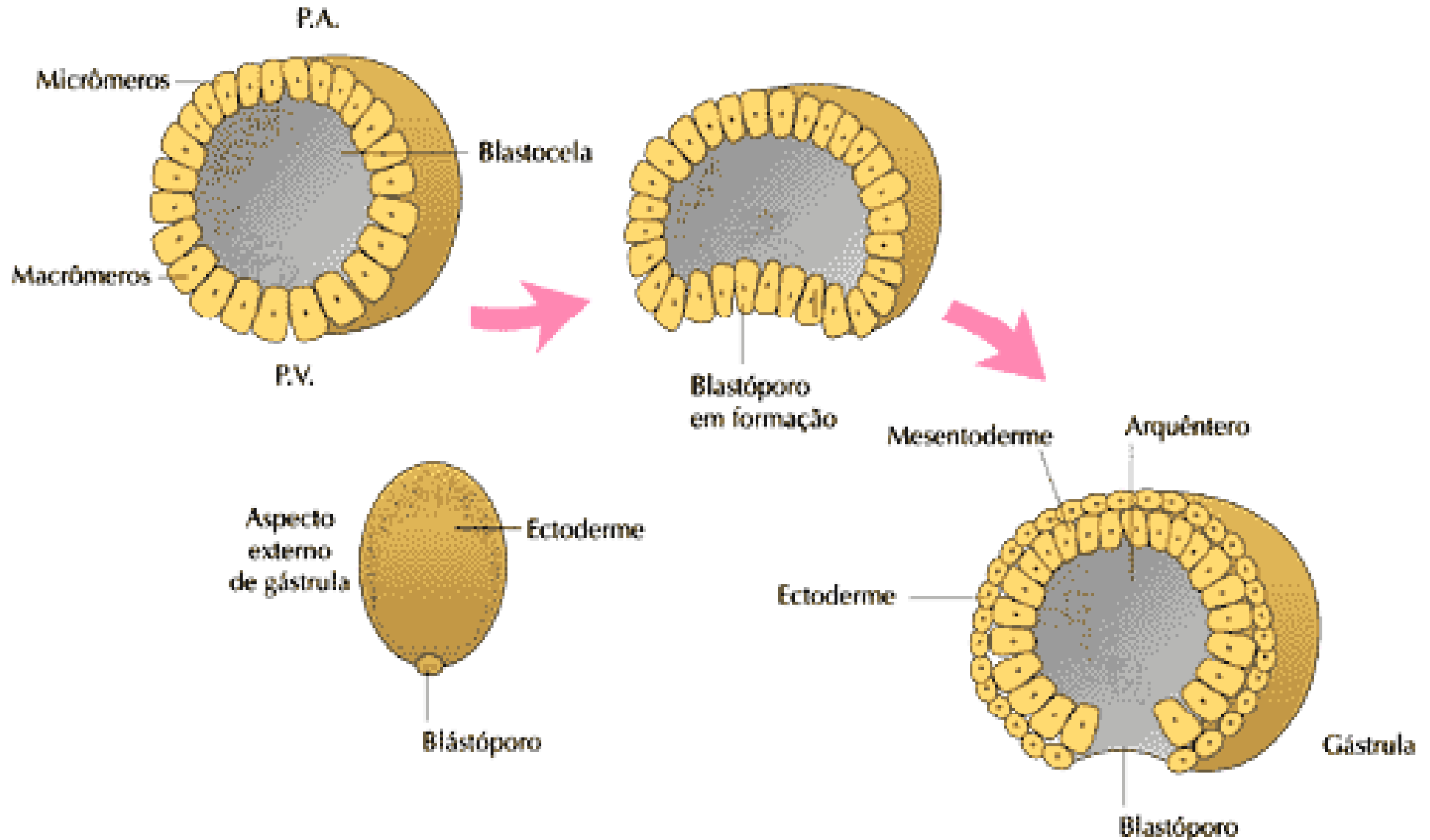


QUANTO À PRESENÇA DE CELOMA



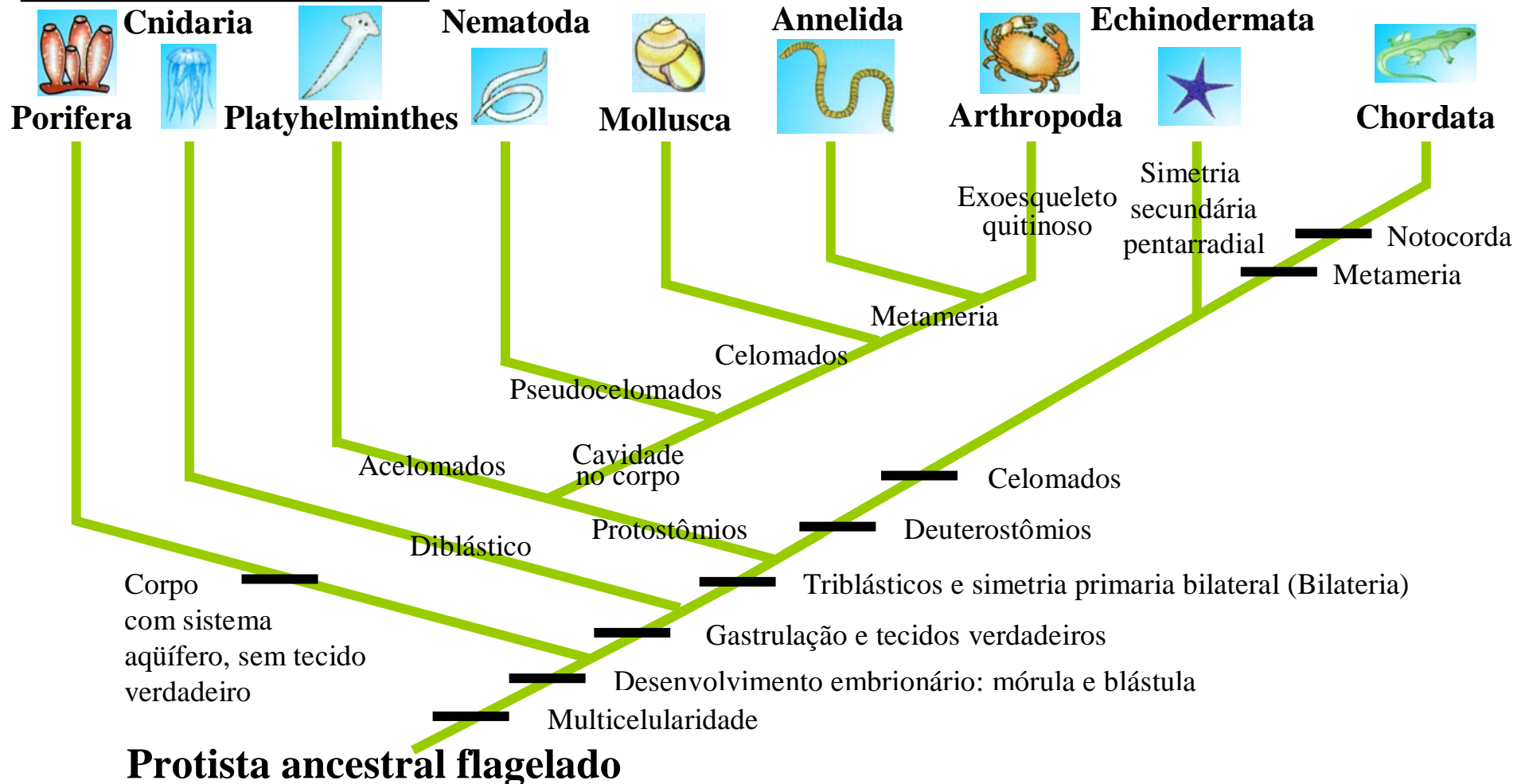


QUANTO AO DESTINO DO BLASTÓPORO

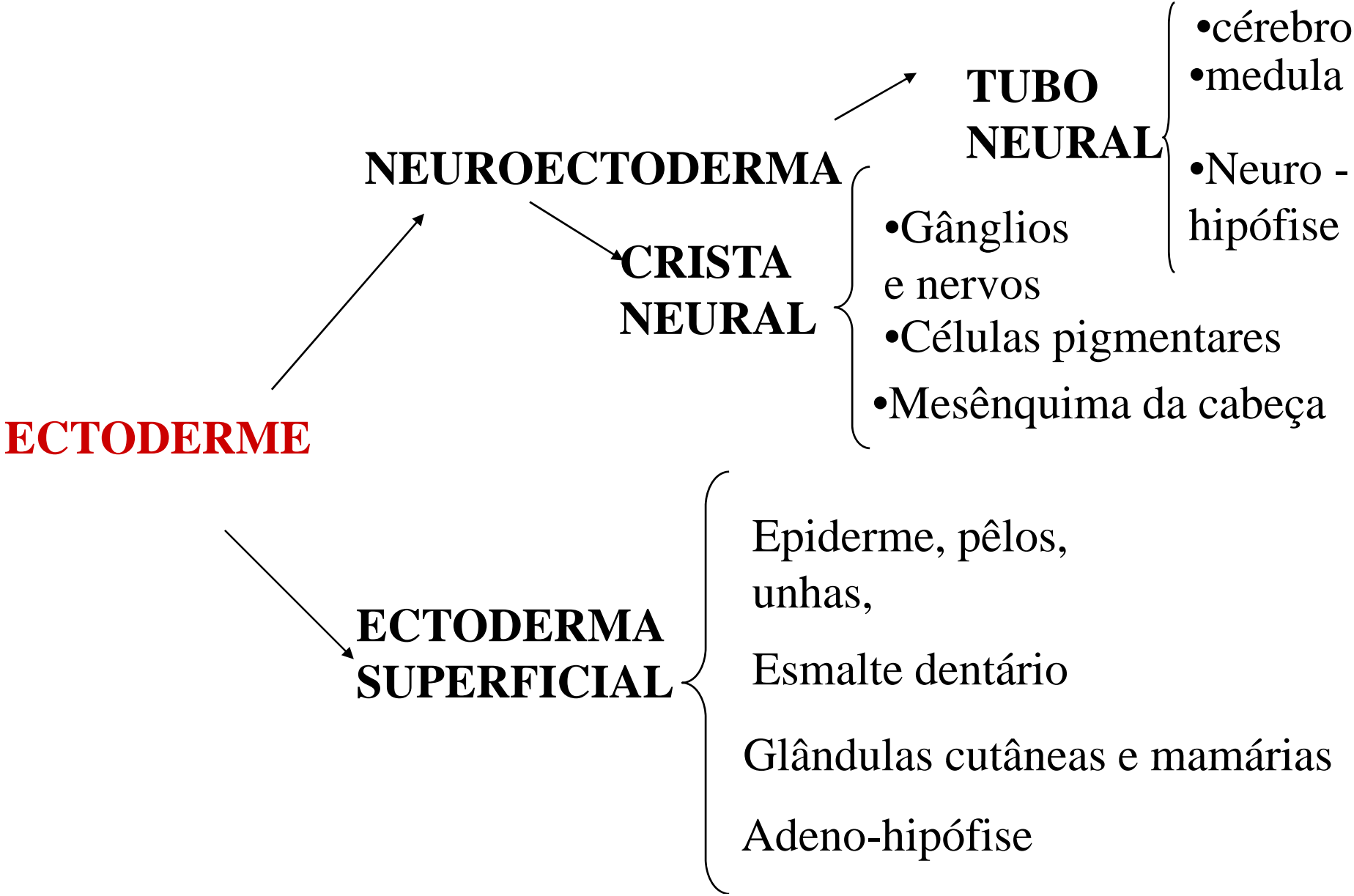


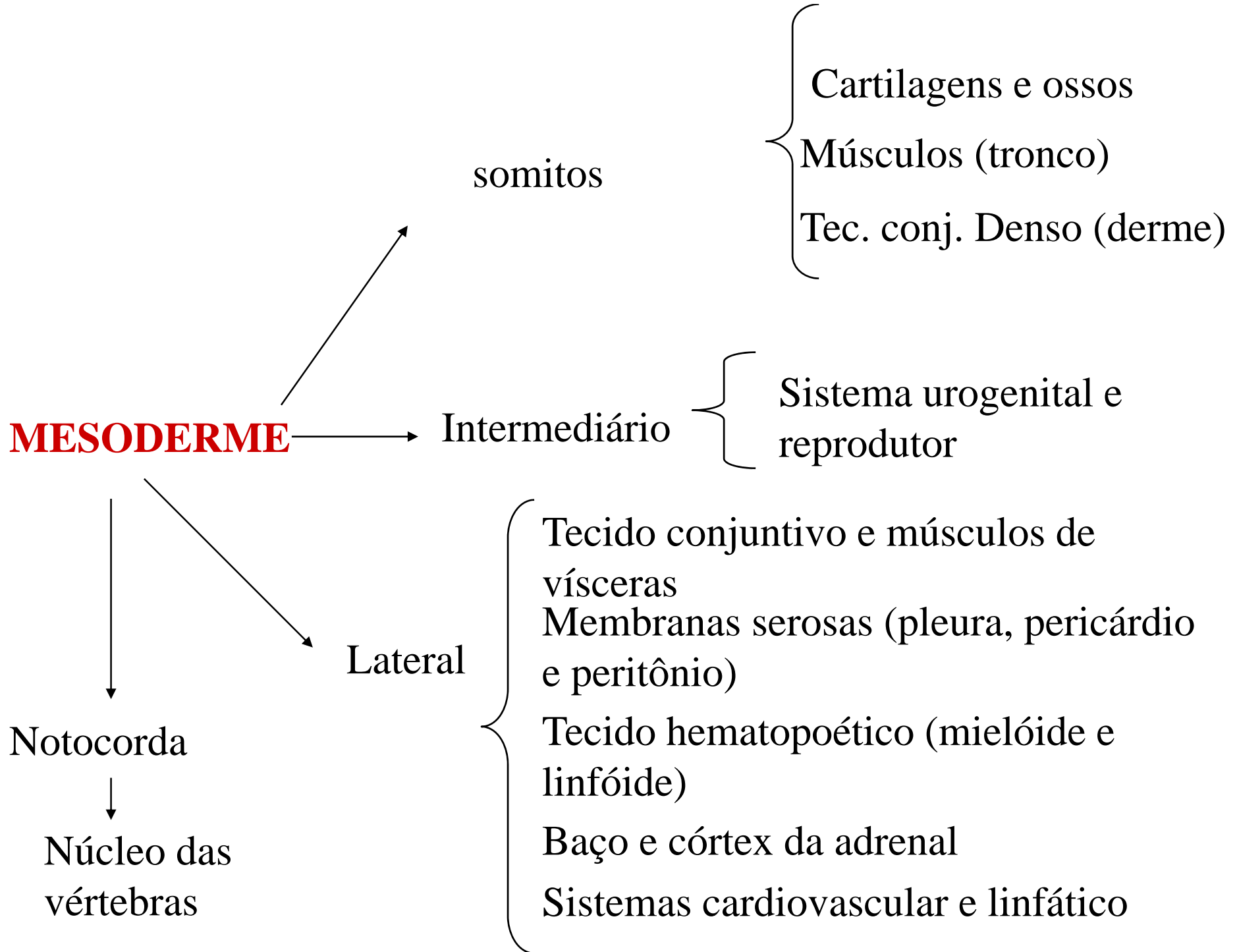


Hipóteses filogenéticas



DERIVADOS DOS FOLHETOS GERMINATIVOS





ENDODERMA

- Trato digestivo(revestimento epitelial)
- Fígado e pâncreas
- Alantóides (bexiga urinária)
- Sistema respiratório (revestimento epitelial)
- Derivados epiteliais da faringe
- Bolsas branquiais(cavidade timpânica, tuba faringeotimpânica, amígdalas, timo, paratireóides
- Derivados epiteliais da tireóide